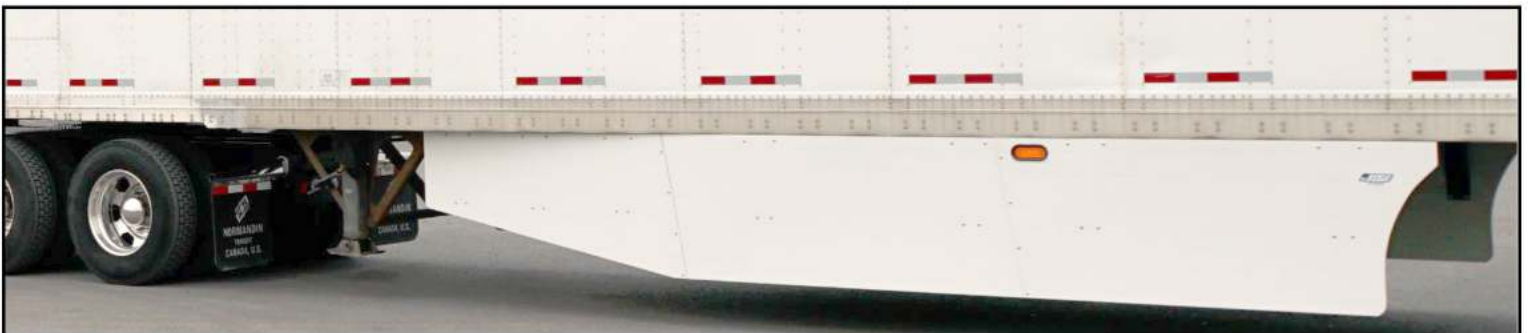




---

# Installation and maintenance procedures manual (Generic)

Rev-01 March 2017





## 1. General information

- a. The Transtex kits were designed for quick installation. They can be easily installed by **two trained technicians in less than 40 minutes** (1.33 man hours).
- b. **Tools**

Quantities mentioned are required for a two-person team

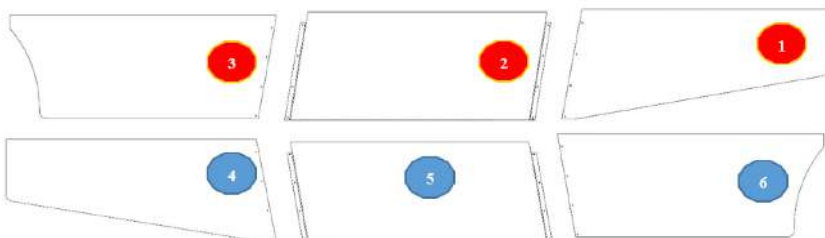
Tool	QTY	Tool	QTY
1. Impact gun (battery or air operated) with ½" and deep sockets (3") 	1	5. C-clamp 	1
2. Wrench (½") 	1	6. Measuring tape 	1
3. Drill with 21/64" drill bit 	1	7. Jig saw for light cut out 	1
4. Phillips screwdriver size #4 	1		

## 2. Parts kit

Each kit is composed of 6 skirt panels and 14 brackets. All panels and brackets are packaged in one box.

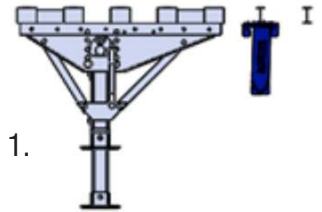


ITEM#	QTY	PART NUMBER	DESCRIPTION
1	1	EZ- FRONT -CURB	<b>CURB</b> SKIRT FRONT PANEL
2	1	EZ-MID-CURB	<b>CURB</b> SKIRT MID PANEL
3	1	EZ- BACK -CURB	<b>CURB</b> SKIRT BACK PANEL
4	1	EZ-FRONT-ROAD	<b>ROAD</b> SKIRT FRONT PANEL
5	1	EZ-MID-ROAD	<b>ROAD</b> SKIRT MID PANEL
6	1	EZ- BACK -ROAD	<b>ROAD</b> SKIRT BACK PANEL
7	14	T-Flex	Bracket
8	1	SH-5	Hardware bag (bolt, washer, and nut). 72 units
9	1	MFS-RK	Reefer kit: U-seal (24") and O-seal (2 ½") in rubber
10	1	Manual	Installation manual



### 3. Installation preparation

- Wear gloves and glasses, safety comes first!
- Move the trailer rear tires and bogies to their most forward position.
- Remove lights.
- Locate the first I-Beam behind the landing gear assembly. This is I-beam no 1.
- Validate that the 19' skirt fits and does not exceed the bogies' most forward position by measuring approximately **218 inches** (18' 2") from the center of I-beam no 1.

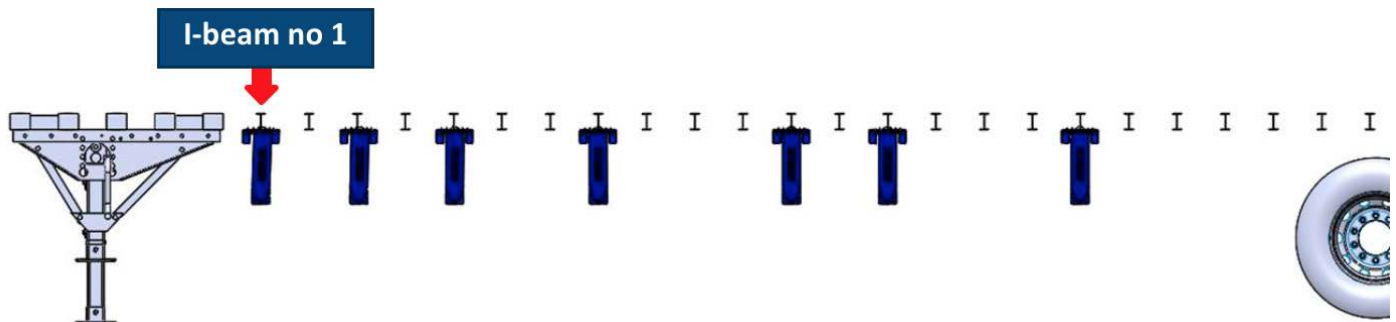


### 4. Installation layout

- Place the **first bracket (bracket no 1)** on **I-beam no 1**.

To install the bracket, simply spread the flanges and clip them onto the I-beam.

- Start from bracket no 1.
- Skip one I-beam, then install bracket no 2.
- Clip the remaining 5 brackets following the installation layout depicted below.

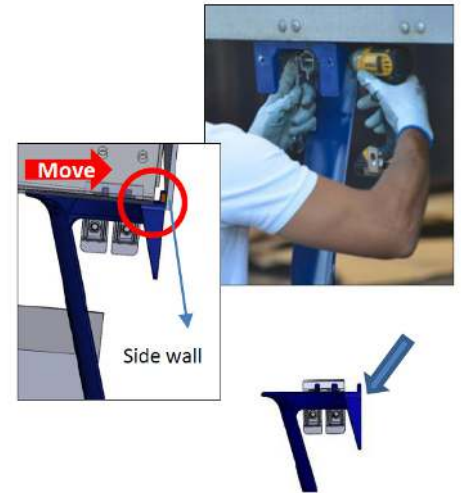
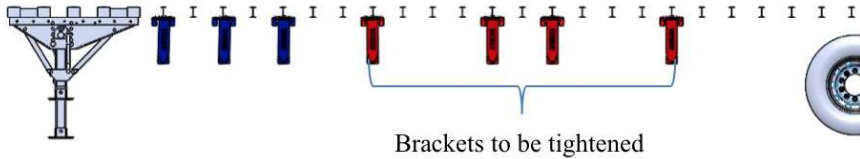


## 5. Assembly (straight section)

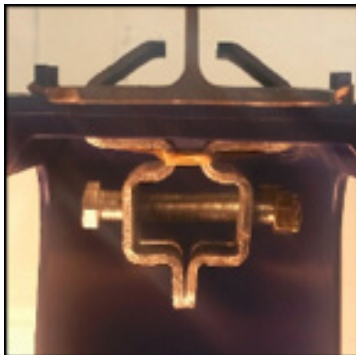
### TO SECURE AN OBJECT, INSERT A BOLT AND TIGHTEN IT.

- a. Only tighten the last 4 brackets onto the I-beams (use tools 1 and 2). Before tightening, push the bracket forward so that it makes contact with the trailer wall. Make sure that each of the bracket's stoppers are making contact with the inside rail of the trailer.

**REQUIRED TORQUE RANGE IS 8 LB TO 10 LB.**



**IMPORTANT: TORQUE LEVEL** Flanges will deform slightly under the required torque



Before  
Torque



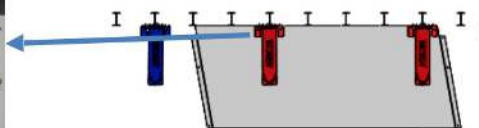
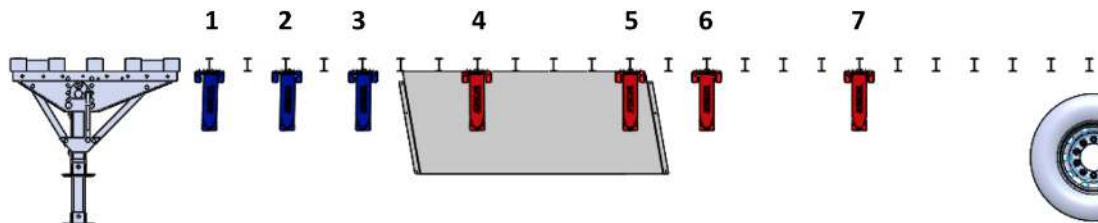
Torque  
8-10 lbs-ft



Over  
Torque

- b. Take Middle Panel no 2. Use a clamp (tool 5) to attach the rear panel corner to bracket no 5.

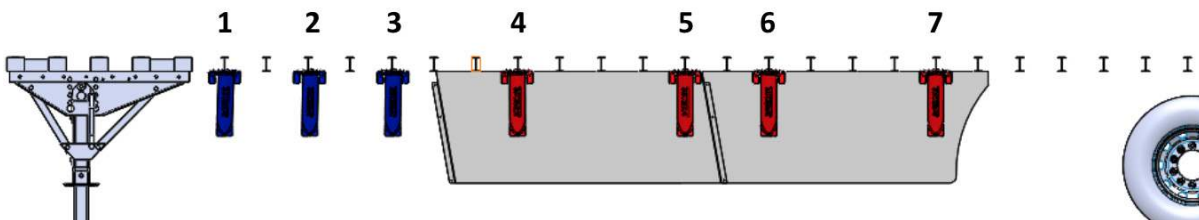
**Align the panel to the side wall. Make sure the panel does not pinch anywhere against the bottom of the trailer, keeping a maximum 1/8" gap between the panel and the bottom edge of the trailer.**



- c. The Inside Technician must drill (tool 3) the forward-most hole of bracket no 4, while the Outside Technician puts pressure on the skirt.
- d. The Outside Technician must insert a bolt and the Inside Technician must insert a washer and nut.
- e. The Inside Technician must tighten the bolt using an impact gun (tool 1), while the Outside Technician secures the bolt with a Phillips screwdriver size # 4 (tool 4).

In order to “Assemble” follow steps c through e. Required torque range is 8 lb to 10 lb.

- f. Remove the clamp on bracket no 5, and assemble the top two holes (step c through e). Make sure to maintain a 1/8” gap.
- g. Drill and secure the second top hole of bracket no 4.
- h. Take Rear Panel no 3. Hold it upright and steady it by placing the bottom back corner on the floor. Loosely attach the bottom front of Rear Panel no 3 to Middle Panel no 2 by inserting a bolt in the bottom hole rear panel and assemble it to the upper joint hole.

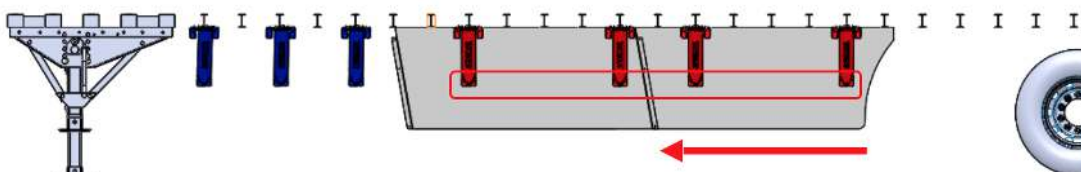


- i. Assemble the panel to the two top holes of bracket no 7, then bracket no 6.

**Make sure the panel does not pinch anywhere against the bottom of the trailer, keeping a 1/8” gap between the panel and the bottom edge of the trailer.**

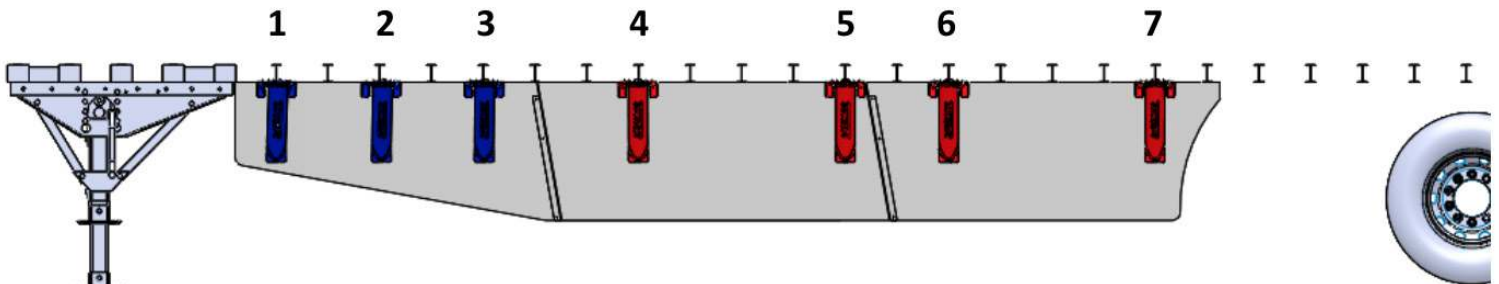
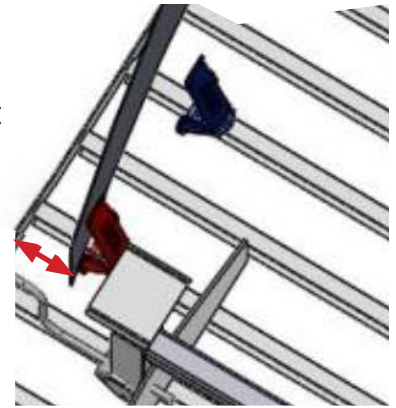


- j. Insert a bolt into the two middle holes of the joint, and assemble all 4 bolts.
- k. **Starting from the back to the front, one bracket at a time**, assemble the bottom holes of the last 4 brackets.

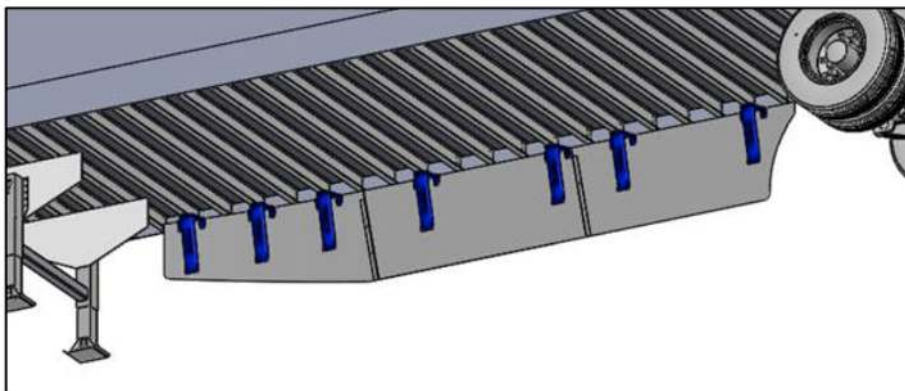
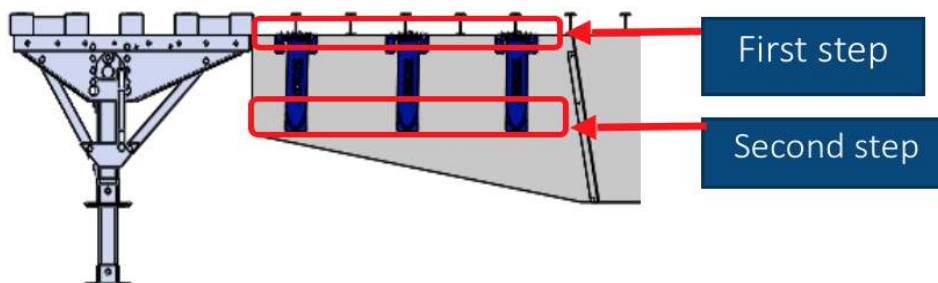
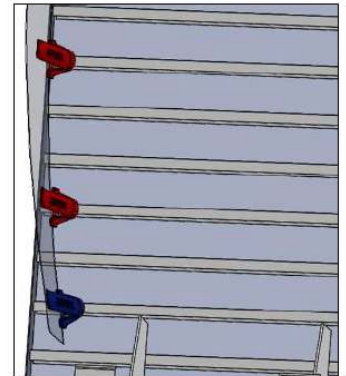


## 6. Assembly (Curve section)

- a. Place bracket no 1 at distance of 5 to 7 inches from the side rail. Rotate the bracket to create better contact with the panel and tighten the flanges. Tighten bracket no 1 to the I-beam.
- b. Take Front Panel no 1. Hold it upright and steady it by placing the bottom front corner on the floor. Loosely attach the bottom back of Front Panel no 1 to Middle Panel no 2 by inserting a bolt in the bottom hole of the joint. Lift the front panel and assemble it to the upper joint hole.



- c. Drill and assemble the top 2 holes of bracket no 1.
- d. Slide brackets no 2 and no 3 up against the skirt panel. Rotate the brackets and push slightly against the panel to create a smooth curve and to create better contact. Tighten the flanges.
- e. Assemble the two remaining brackets to the panel by drilling the top two holes and securing the bolts.
- f. For the first 3 brackets, drill the bottom holes, then assemble them with bolts.



## 7. Installation of the side turn lamp (if required)



a. Trace the shape of the light



b. Use a jigsaw (tool 7) to cut through the panel



c. Install the light and connect all wires

## 8. Cutting out the fuel tank nozzle and gage indicator (for reefer trailer)

### IMPORTANT NOTE

To be CARB (California Air Resources Board) Compliant, the following instructions must be respected

- **Maximum** dimension of the round opening hole is 5"
- **Maximum** dimension of the U opening hole is 5" X 8"
- **Maximum** dimension of the gage indicator hole is 3"



a. Use a 4 ½" hole saw to make a round opening for the tank nozzle. It is possible to make a "U" shaped opening if you think it would be hard for the driver to access the nozzle.



b. Place the trim seal provided by Transtex around the opening in order to protect its edges.



c. Use a 2 ¾" hole saw to make a round opening for the gage indicator. Insert the 2.5" round seal provided by Transtex.

## 9. Periodic maintenance & inspection

The Transtex Skirt is designed to stay on the trailer, maintain its shape, and not require special care for the lifetime of the trailer. However, we understand that the trailer and side skirt will be subject to minor or significant damage that may affect the appearance of the skirt panel or the integrity of the attachments and brackets. The standard inspection time is 10 minutes.

Routine inspections conducted every six (6) months on the trailer as part of a periodic maintenance (PM) program should include a visual inspection of the following components:

**The Outside of the panels:** 1 - Look for holes, deep scratches, delamination at edges, and major changes in the shape of the panel.

**The Inside of the panels:** 1 - Check the tightness of the flange bolts clamping the brackets to the trailer cross-members. Tighten loose bolts and nuts, if required.

2 - Look for signs of broken brackets.

## 10. Technical inquiries & Spare parts

It will be our pleasure to assist you with any technical inquiries you may have. For immediate assistance please contact:

### Technical assistance

Office: (877) 332-3519 ext: 125

[installation@transtex-llc.com](mailto:installation@transtex-llc.com)

Should you require replacements parts, please contact Transtex to place an order or visit our website [www.transtex-llc.com](http://www.transtex-llc.com) to find your nearest authorized dealers:

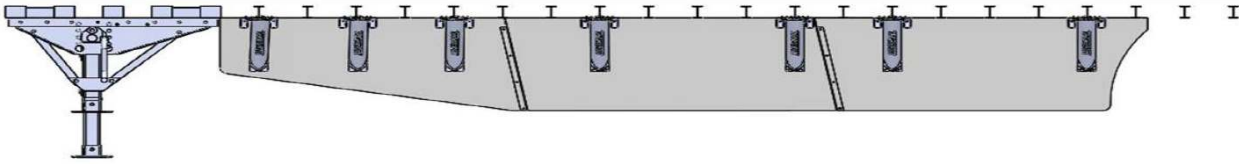
### Customer Service

Office: (877) 332-3519 ext: 109

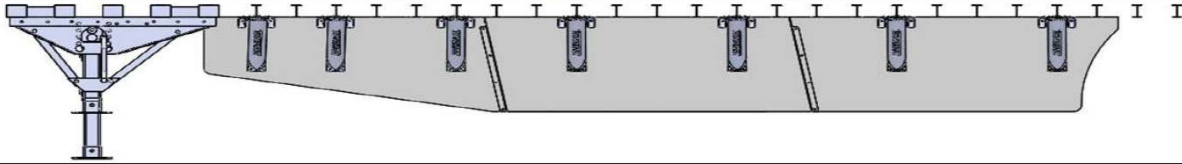
[info@transtex-llc.com](mailto:info@transtex-llc.com)

## Layouts Table (DRY BOX)

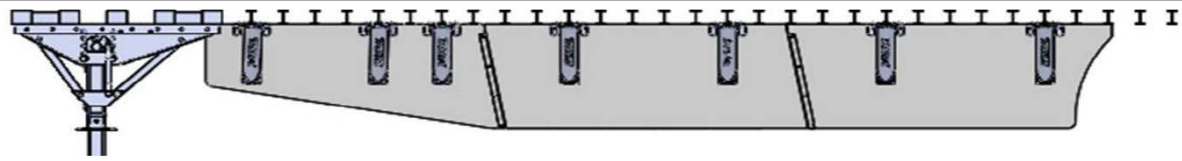
### 12 Inches. I-beams center to center spacing (bay area)



### 10 Inches I-beams center to center spacing (bay area)

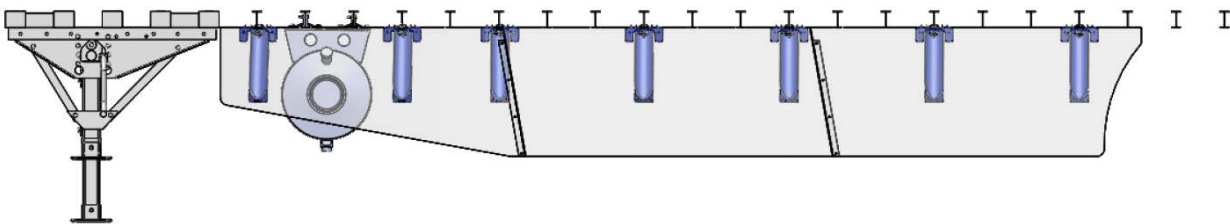


### 8 Inches I-beams center to center spacing (bay area)

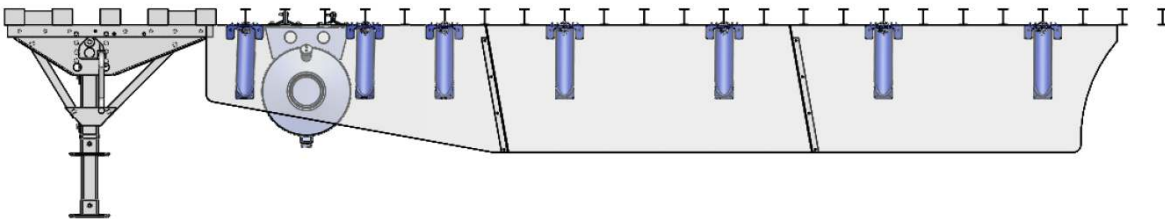


## Layouts Table (REEFER)

### 12 Inches. I-beams center to center spacing (bay area)



### 10 Inches I-beams center to center spacing (bay area)



### 8 Inches I-beams center to center spacing (bay area)

