



# AERODYNAMIC SIDE SKIRT KIT

---

INSTALLATION AND MAINTENANCE PROCEDURES MANUAL  
(GENERIC)










## 1. General Information

- a. The Transtex kits were designed for quick installation. They can be easily installed by **two trained technicians in less than 30 minutes (1 man hour)**.

### b. Tools

Quantities mentioned are required for a two-person team

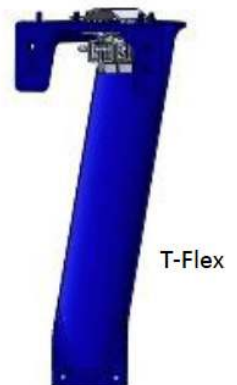
Tool	QTY	Tool	QTY
1. Impact gun 1/2" (battery or air operated) with 3" deep sockets 	1	5. Measuring tape 	1
2. Wrench (1/2") 	1	6. Jig saw for light fixture cut out 	1
3. Drill with 21/64" drill bit 	1	7. Panel holder set (2) and one aluminum beam  NOTE: You can also use 2 bottle jacks or an equivalent tool (traditional method) to lift the panel if you do not have the panel holder 	1
4. Phillips screwdriver size #4 	1		

## 2. Parts Kit

Each kit is composed of two side skirt panels and one box which includes all necessary brackets and a hardware bag (bolts, flange nuts). This table lists standard kits.

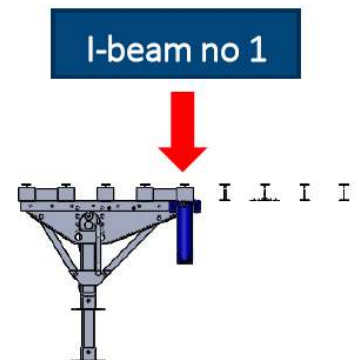
NO	Kit type	Description	Qty of brackets T-Flex/kit
1	E-1332T	Aerodynamic kit. 13 feet long. 32 inches wide	10
2	E-1932T	Aerodynamic kit. 19 feet long. 32 inches wide	14
3	E-1930T	Aerodynamic kit. 19 feet long. 30 inches wide	14
4	E-2130T	Aerodynamic kit. 21 feet long. 30 inches wide	16
5	E-2330T	Aerodynamic kit. 23 feet long. 30 inches wide	16

Note: Quantities of items may change according to the specifications of the trailer and the skirt's length.



### 3. Installation Preparation

- a. Wear gloves and glasses, safety comes first!
- b. Move the trailer rear tires and bogies to their most forward position.
- c. Remove the lights.
- d. Locate the first I-Beam of the landing gear assembly.  
This is **I-beam no 1**. *I-Beam no 1 is the same for the 2330 kit.*
- e. Validate that the 19 foot skirt fits and does not exceed the bogey's most forward position by measuring approximately **218 inches** (18' 2") from the center of I-beam no 1. Measure 266 inches for a **2330 skirt**.



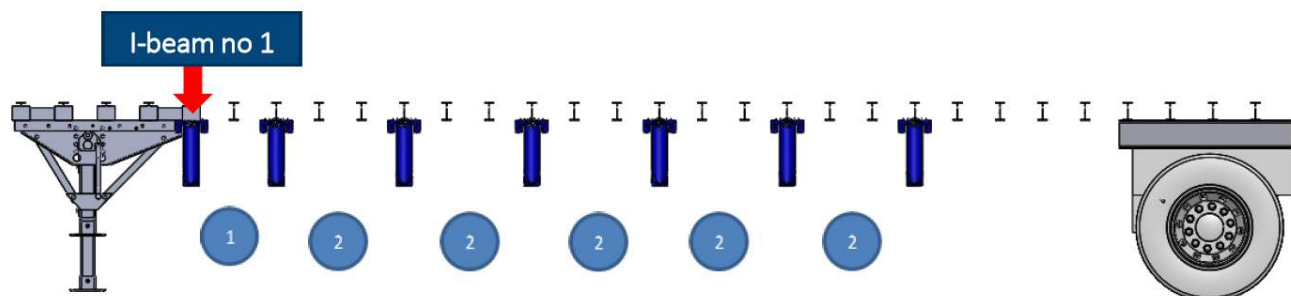
**PLEASE NOTE THAT THE INSTALLATION STEPS ARE PRESENTED WITH THE 1932 KIT AS AN EXAMPLE**  
**ALL OTHER LAYOUTS ARE AVAILABLE IN THE APPENDIX**

## 4. Installation Layout

- a. Place the first bracket onto I-beam no 1.  
This is bracket no 1.

To install the bracket, simply spread the flanges and clip them onto the I-beam. (See section 9 for special I-beams)

- b. Starting from the first bracket (**Dry Van only**)
- I. Skip one (1) I-beam
  - II. Install a bracket (loosely attached)
  - III. Skip two (2) I-beams
  - IV. Install a bracket (loosely attached)
  - V. Repeat step III and IV until all brackets have been installed.



### IMPORTANT NOTE

**This layout should only be used for the 1932T Kit if the trailer's I-beams are 12 inches apart, center to center. Otherwise, refer to the appendix for different trailer specifications.**

## IMPORTANT NOTE

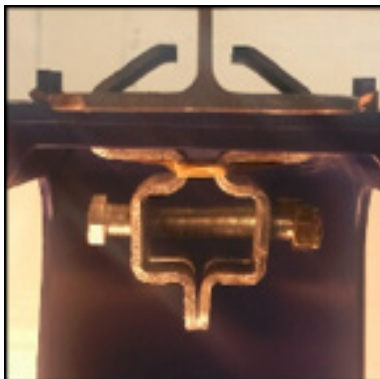
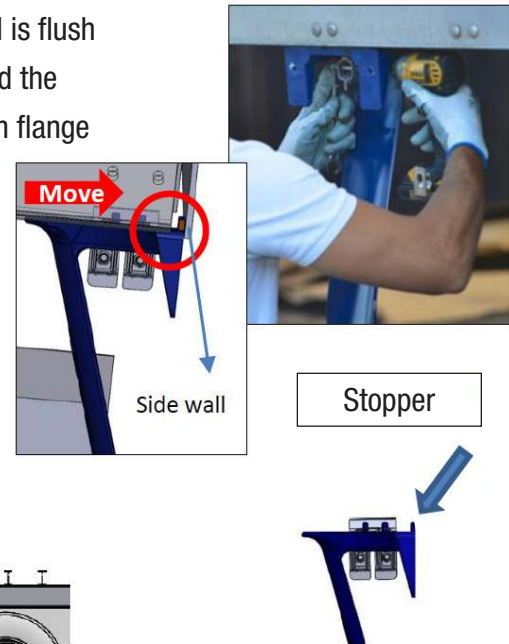
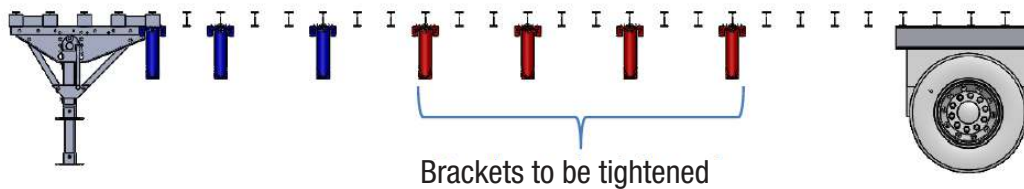
Please take note that unless otherwise specified by the OEM or the end user:

1. The bogies are at their most forward position
2. The edge of the trailer wall is flush with the bottom of the I-beam
3. There are no objects between the bogey and the landing gear
4. The landing gear wing plate is full solid
5. The I-beam bottom flange thickness is between 0.125" and 0.5"

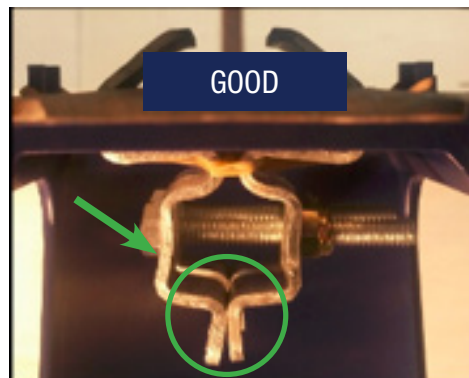
## 5. Assembly

- a. Using an impact gun and a wrench, only tighten the last 4 brackets onto the I-beams. Before tightening, push the bracket forward so that it makes contact with the trailer wall. Make sure that each of the brackets' stoppers are making contact with the inside rail of the trailer.

**The required torque range is between 8 lb and 10 lb.**



Before  
Torque



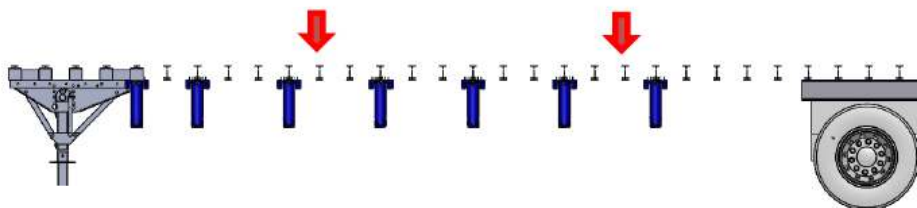
Torque  
8-10 lbs/ft



Over  
Torque

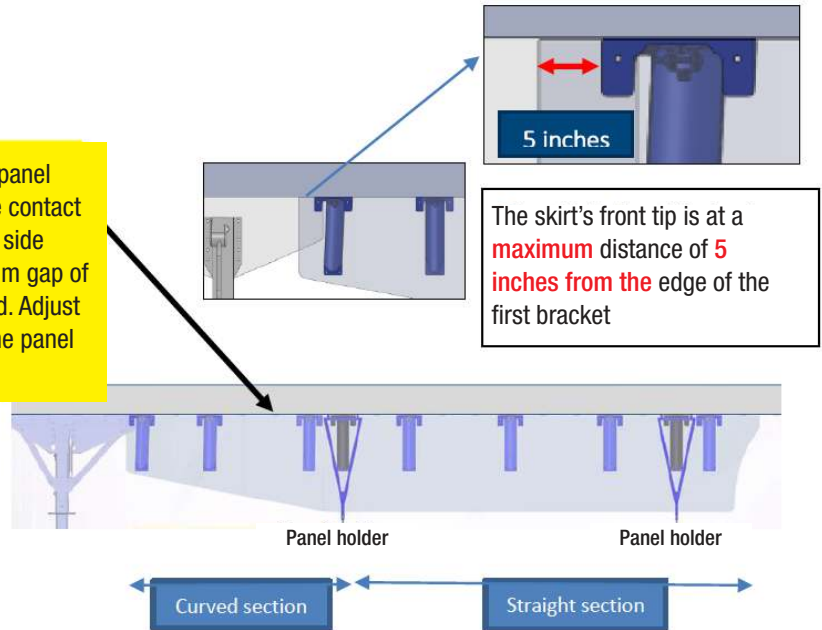
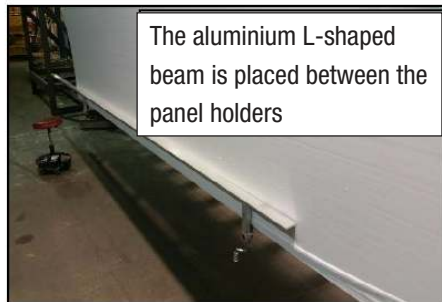
**IMPORTANT: TORQUE LEVEL** The flanges will deform slightly under the required torque

- b. Install the panel holders onto the indicated **I-Beams** and place the panel in the holders. Insert the aluminum beam between the two panel holders. When placing the panel, make sure that the skirt tip is at a **maximum distance of 5 inches** from the first bracket's edge (beside the landing gear).





The top of the panel must not make contact with the trailer side rail. A maximum gap of 1/8" is required. Adjust the gap with the panel holders



Layouts are designed with two restrictions:

1. There must be a **maximum of 5 inches** from the front tip of the skirt and the top edge of the first bracket
2. There must be a **maximum of 12 inches** from the rear tip of the skirt and the top edge of the last bracket

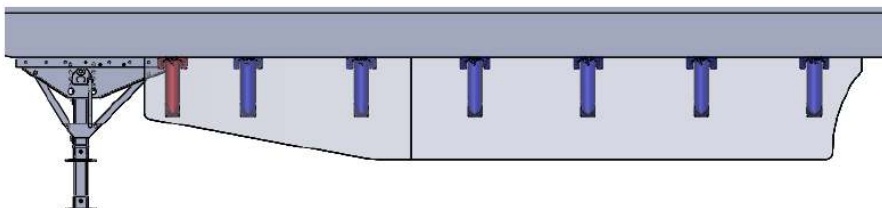
**NOTE:** You can use two bottle jacks or an equivalent tool (traditional method) to lift the panel if you do not have the panel holder

- c. Remove the protective film from the panel.
- d. Lift the panel to a maximum gap of 1/8" from the trailer side rail. Use the bottom bolt of the panel holder to adjust the gap. Keep this gap consistent from the front to the back of the panel.

### IMPORTANT NOTE

**The first bracket is generally installed in front of the landing gear, between 4" and 10" away from the side rail. If a minimum of 4" cannot be met, install the bracket behind the landing gear.**

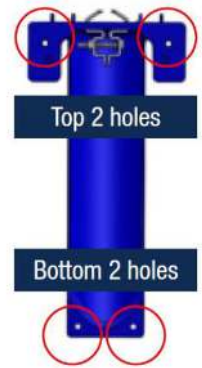
- e. Starting from the front of the skirt, secure bracket no 1 to the panel. Push the bracket forward to align it with the side rail. Using only one of the two required bolts, tighten it temporarily onto the I-beam. (Before proceeding, push bracket no 1 up against the landing gear and validate that there are at least 4" between the side rail and the bracket. If not, place the bracket behind the landing gear.)





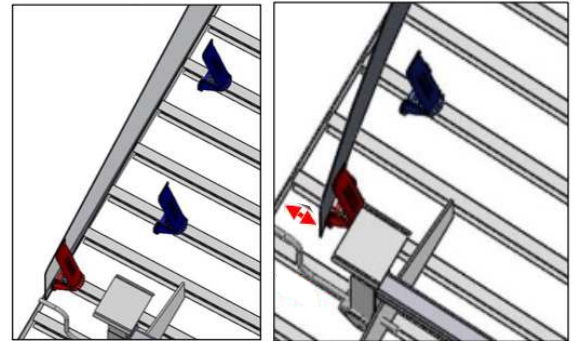
- f. The Inside technician must drill through the top holes of the bracket, while the outside technician applies light pressure to the skirt.
- g. The outside technician must insert a bolt through each hole, and the inside technician must insert a flange nut.
- h. The inside technician must tighten the bolt using an impact gun, while the outside technician secures the bolt with a size 4 Phillips screwdriver.

**The required torque range is between 8 lb and 10 lb.**



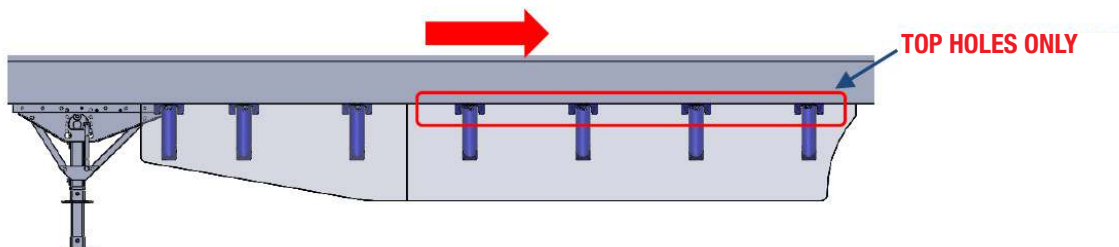
- i. Secure the **2 bottom holes** of the first bracket by repeating steps **f** through **h**.

- j. In order to create the front curve, untighten the first bracket and push the panel inward until the first bracket touches the landing gear or until it is at a distance of 10" from the side rail. While pushing the panel inward, shake it well so that the rear part of the panel is adjusted and the stress caused by the adjustment is released (this step helps create a smooth curve without a bump at the start of the curve). Tighten the 2 bolts.

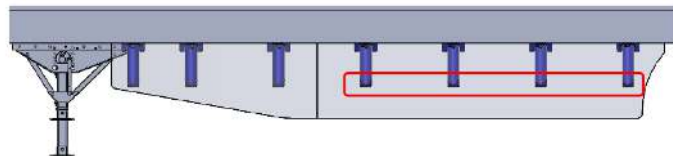


**For steps k and l, starting from the front, secure ONE bracket at a time**

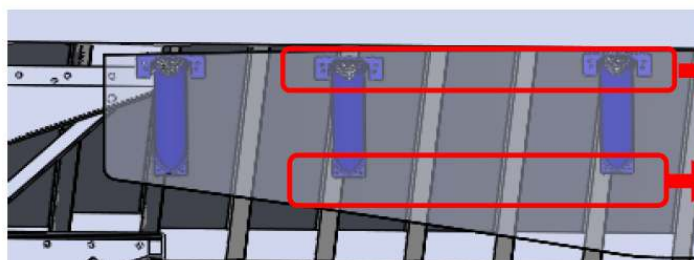
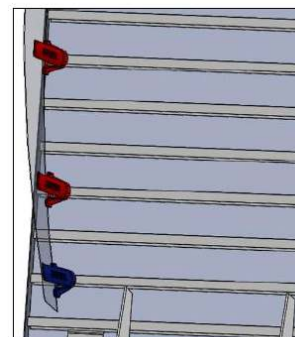
- k. Assemble the skirt panel with the brackets located on the **straight section**. Secure the top holes only. Refer to steps **f** through **h**



- l. Once the top holes of the brackets are secured, drill and secure the bottom holes by following steps f through h. During this step, the outside technician must make sure that the aluminum beam is still in contact with the panel so as to have a perfect alignment.

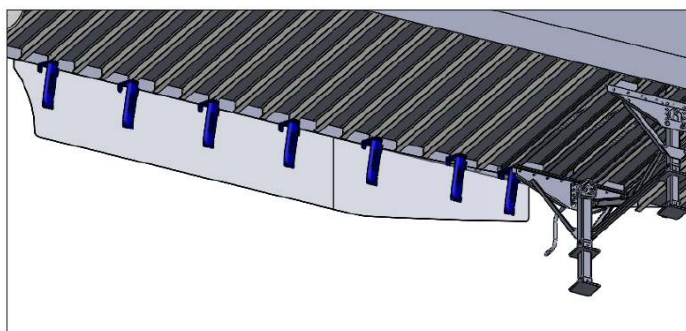


- m. Slide the two remaining brackets up against the skirt panel. Rotate them and push slightly against the panel to create a smooth curve and to create better contact with the panel. Tighten the flanges.
- n. Assemble the two remaining brackets to the panel by drilling the top two holes and securing the bolts.
- o. Drill the bottom holes and secure them with bolts.



First step

Second step



## 6. Installation of the Side Turn Lamp



a. Trace the shape of the light



b. Use a jig saw (tool 6) to cut through the panel



c. Install the light and connect all wires

## 7. Cutting Out the Fuel Tank Nozzle and Gage Indicator (For Reefer Trailers)

### IMPORTANT NOTE

To be CARB (California Air Resources Board) Compliant, the following instructions must be respected

- Maximum dimension of the round opening hole is 5"
- Maximum dimensions of the U opening are 5" X 8"
- Maximum dimension of the gage indicator hole is 3"



a. Use a 4 1/2" hole saw to make a round opening for the tank nozzle. It is possible to make a "U" shaped opening if considered easier for the driver to access the nozzle.



b. Place the trim seal provided by Transtex around the opening in order to protect its edges.



c. Use a 2 3/4" hole saw to make a round opening for the gage indicator. Insert the 2.5" round seal provided by Transtex.

### IMPORTANT NOTE

The fuel tank nozzle should be at least 1 inch away from the skirt panel



## 8. Periodic Maintenance and Inspection

The Transtex Skirt is designed to stay on the trailer, maintain its shape, and not require special care for the lifetime of the trailer. However, we understand that the trailer and side skirts may experience minor or significant damage that may affect the appearance of the skirt panel or the integrity of the attachments and brackets. The standard inspection time is 10 minutes.

As part of a periodic maintenance program, routine inspections should be conducted every six months on the trailer. These should include a visual inspection of the following components:

### The Outside of the panels:

- Look for holes, deep scratches, delamination at edges, and major changes in the shape of the panel.

### The Inside of the panels:

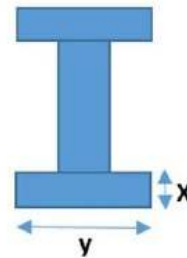
- Check the tightness of the flange bolts clamping the brackets to the trailer's cross-members.  
Tighten loose bolts and flange nuts, if required.
- Look for signs of broken brackets.

## 9. Special I-Beams

The new bracket (T-Flex) has been designed to fit all standard I-beams in the industry. However, there are 2 special I-beams that require a shim in order to provide the proper clamping force.

When the trailer's specifications are known in advance, Transtex will include shims with the kit. The shims will already be pre-assembled to the bracket. Otherwise, if you require shims please contact the Installation Support Department at Transtex.

Special I-beams		
I-beam	Width (Y)	Thickness (X)
1	1.75 in.	0.165 in.
2	1.50 in.	0.19 in.



## 10. Technical Inquiries and Spare Parts

It will be our pleasure to assist you with any technical inquiries you may have. For immediate assistance please contact:

### Technical assistance


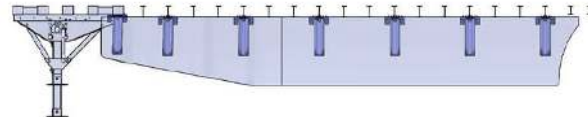
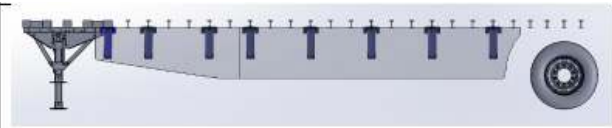

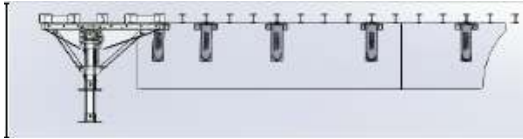
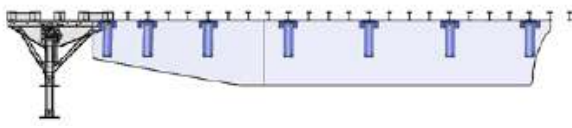
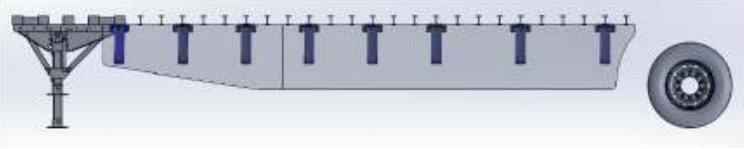
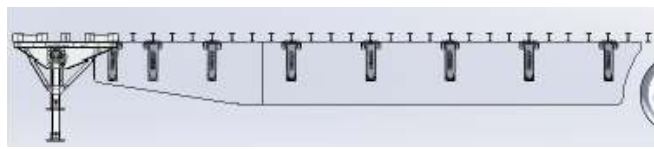
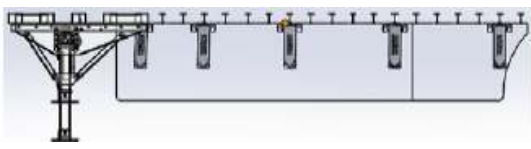
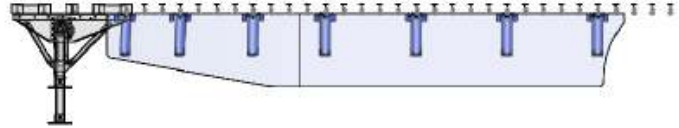
Office: (877) 332-3519 ext: 125  
installation@transtex-llc.com



### Customer Service

Office: (877) 332-3519 ext: 109  
info@transtex-llc.com

Should you require replacements parts, please contact Transtex's Customer Service Department to place an order or visit our website: [www.transtex-llc.com](http://www.transtex-llc.com) to find your nearest authorized dealer:

## Layouts Table (DRY BOX)

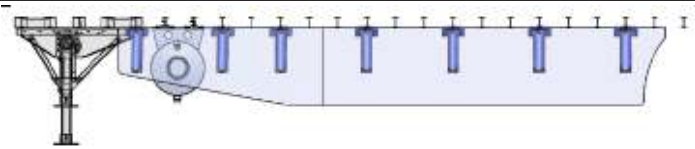
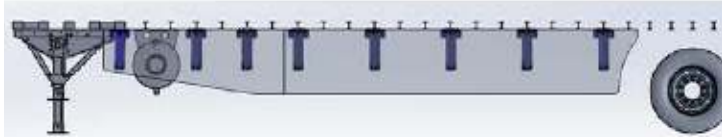
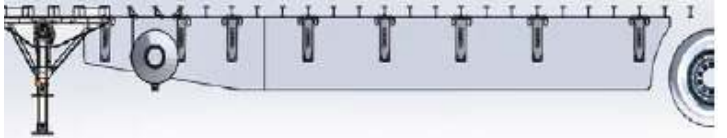
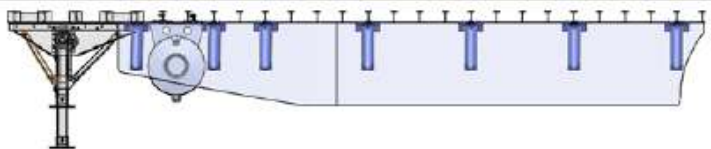

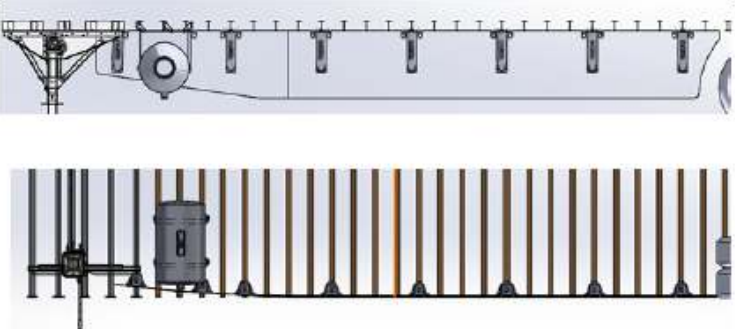
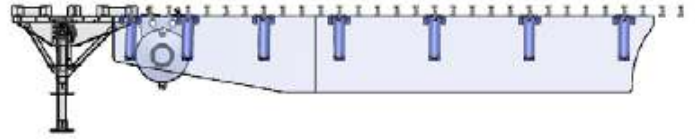

12 Inches I-beams Center to Center Spacing (Bay Area)			
Kit	Sequence*	Quantity of Brackets per Side	Layout
E-1332T	1, 2, 2, 2	5 - Straight section: 1 - Curved section: 4	
E1932T/E-1930T	1, 2, 2, 2, 2, 2	7 - Straight section: 4 - Curved section: 3	
E-2130	1, 2, 1, 2, 2, 2, 2	8 - Straight section: 5 - Curved section: 3	
E-2330T	1, 2, 2, 2, 2, 2, 3	8 - Straight section: 5 - Curved section: 3	
10 Inches I-beams Center to Center Spacing (Bay Area)			
E-1332T	1, 2, 3, 3	5 - Straight section: 1 - Curved section: 4	
E1932T/E-1930T	1, 2, 3, 3, 3, 3	7 - Straight section: 4 - Curved section: 3	
E-2130	2,2,2,2,2,3,3	8 - Straight section: 5 - Curved section: 3	
E-2330T	1,2, 3, 3, 3, 3, 3	8 - Straight section: 5 - Curved section: 3	
8 Inches I-beams Center to Center Spacing (Bay Area)			
E-1332T	2, 3, 4, 4	5 - Straight section: 1 - Curved section: 4	
E1932T/E-1930T	2, 3, 3, 4, 4, 4	7 - Straight section: 4 - Curved section: 3	

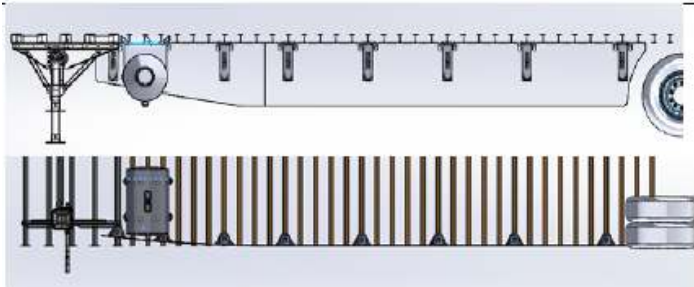
E-2130	2,3,3,3,3,4,4	<p>8</p> <p>- Straight section: 5</p> <p>- Curved section: 3</p>	
E-2330T	2, 3, 3, 4, 4, 4, 4	<p>8</p> <p>- Straight section: 5</p> <p>- Curved section: 3</p>	

**\* Number of I-beams to skip between brackets**

**PLEASE CONTACT TRANSTEX FOR ALL OTHER TRAILER SPECIFICATIONS THAT ARE NOT INCLUDED IN THESE LAYOUTS TABLES**

## Layouts Table (REEFER BOX)

12 Inches I-beams Center to Center Spacing (Bay Area)			
Kit	Sequence*	Quantity of Brackets per Side	Layout
E-1932T E-1930T	2, 1, 2, 2, 2, 2	7 - Straight section: 4 - Curved section: 3	
E-2130 T	2, 1, 2, 2, 2, 2	8 - Straight section: 5 - Curved section: 3w	
E-2330T	2, 1, 2, 2, 2, 2, 3	8 - Straight section: 5 - Curved section: 3	
10 Inches I-beams Center to Center Spacing (Bay Area)			
E-1932T E-1930T	2, 1, 3, 3, 3, 3	7 - Straight section: 4 - Curved section: 3	
E-2130	2,2,2,2,2,3,3	8 - Straight section: 5 - Curved section: 3	
E-2330T	2, 1, 3, 3, 3, 3	8 - Straight section: 5 - Curved section: 3	
8 Inches I-beams Center to Center Spacing (Bay Area)			
E-1932T E-1930T	2, 3, 3, 4, 4, 4	7 - Straight section: 4 - Curved section: 3	
E-2130	3,2,3,3,3,4,4	8 - Straight section: 5 - Curved section: 3	

E-2330T	2, 3, 3, 4, 4, 4, 5	<p>8</p> <p>- Straight section: 5</p> <p>- Curved section: 3</p>	
---------	---------------------	--	--

**PLEASE CONTACT TRANSTEX FOR ALL OTHER TRAILER SPECIFICATIONS THAT ARE NOT INCLUDED IN THESE LAYOUTS TABLES**