



E-SMART, Transtex's newly launched speed and fuel management system, is bridging the gap between tomorrow's autonomous truck and today's equipment. E-SMART's intelligent system offers fleets an innovative way of improving safety, security, compliance and fuel efficiency through proactive and real-time driver management, fleet monitoring and control. E-SMART is a system that takes action for the administrator all while providing online reporting through an intuitive and simple web portal.

E-SMART SPEED MANAGEMENT

E-SMART offers an intelligent speed management solution. It actively corrects excessive speeding habits and helps drivers adopt safer ones. Using GPS technology, the E-SMART system accurately determines a driver's location in real time and caps the maximum speed that the vehicle can attain in a posted speed zone. Based on fleet preference, a predetermined maximum vehicle speed for each speed zone can be programmed into the system.

Additionally, E-SMART offers geofencing, the creation of a virtual geographic boundary, that allows a fleet to set specific speed limits to particular locations. Examples include geofencing school zones or fleet yards for increased safety.

HOW IT WORKS

E-SMART is connected to the truck's throttle position sensor (TPS) which sends signals to the Engine Control Module (ECM). Based on the driver's location and predetermined speed limits, the E-SMART system cuts their ability to speed without impeding their ability to accelerate up to the speed limit.



E-SMART FUEL MANAGEMENT

The fuel management solution is an additional feature available with E-SMART. Using Load Based Power Management, the system assesses the required engine power according to the load it is carrying. The primary advantage of the power management feature is the thousands of gallons of fuel saved yearly. Based on the administrator's preference, a predetermined maximum power allocation can be programmed into the system.

HOW IT WORKS

The system is connected to the truck's TPS and air suspension allowing it to continuously read the vehicle's payload. The system adjusts the throttle position accordingly to ensure the engine delivers the necessary horsepower. E-SMART guarantees savings regardless of driver improvement and driver turnover. With the fuel management feature, analyzing reports and providing driver coaching is no longer required to achieve better results.

	Payload	Power Adjustment
	100% Payload	Allocation 100%
	66% Payload	Allocation 92.5%
	33% Payload	Allocation 87%
	0% Payload	Allocation 80%

E-SMART ADVANTAGE

SPEED MANAGEMENT

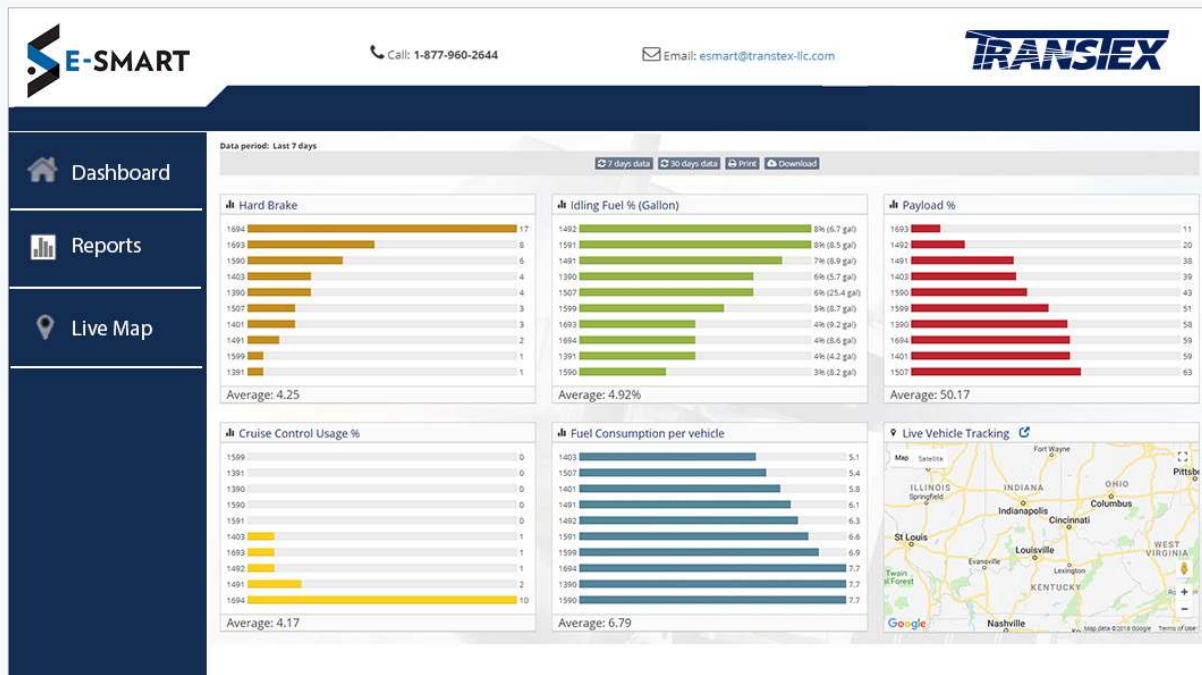
- Active speed limiter
- Proactive driver management
- Improve driver, passenger and road user safety
- Reduce speeding offenses
- Maintain or improve CSA scores
- Fleet tracking in real time
- Scheduled reporting
- Geofencing
- Improve fuel efficiency and vehicle control
- Reduce maintenance costs

FUEL MANAGEMENT

- Actively corrects bad driving habits
- Fleet operators benefit immediately from fuel savings
- Reduces fuel consumption by 300 to 700+ gallons per truck per year
- No driver training or fleet manager reporting required
- Maintenance free

THE WEB PORTAL

Intuitive dashboard conveniently showcases KPIs such as Hard Brake, Idling Fuel %, Payload %, Cruise Control Usage %, Fuel Consumption and Live Vehicle Tracking.



E-SMART COMPATIBILITY

E-SMART is compatible with all makes and models of trucks and engines.

Includes:

- Cummins
- Detroit Diesel
- Freightliner
- Hino
- International
- Kenworth
- Mack
- PACCAR
- Peterbilt
- Sterling
- Volvo
- Western Star